

3P Wall & Floor Mounted Controllers

Rainwater Manager with demand-driven mains water back-up

- **Automatic rainwater manager**
- **Simple installation**
- **Flow rates up to 6m³/h**
- **Low Working Maintenance**
- **Compact and easy to use**

Features

Seamless Mains Water Backup

In the event of an insufficient supply of rain water the 3P Wall and Floor Mounted Controller systems switch over to pump mains water, via a motorised valve and float switch, when the stored rainwater level is low, and continue until the rain water supply is restored.

Compact and Automatic

The 3P Wall and Floor Mounted Controllers are compact, totally automatic systems.

A range of Power Ratings and two Body Types

The controllers are available in both floor and wall mounted profiles, both integrating our popular Steelpumps in a variety of power ratings to suit your needs.

Quiet Operation

The pressure operated water-cooled, centrifugal pump ensures a constant delivery of water with minimal vibration or noise.

Stagnation Protection

Automatic flushing of mains water after 10 days to prevent stagnation of the water in the break tank.

Air-gap

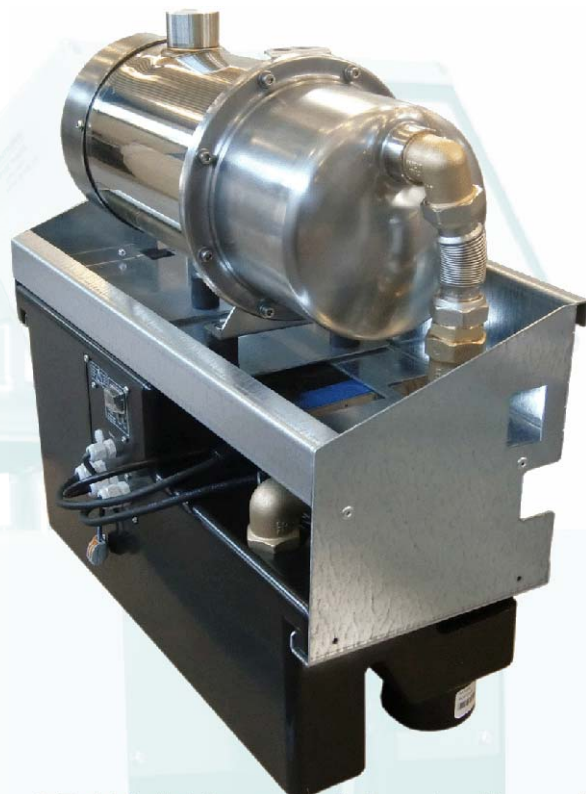
The system is equipped with an air-gap and overflow to protect against any possible contamination of the mains water by backflow of rainwater.

Overflow Indicator

The 75mm overflow spigot is suitable for feeding into standard 110mm pipe. Leaving a gap between the two gives both a visual and audible alarm when the overflow is active (Overflowing water can be seen and heard).

Booster Pump Supplied

Supplied with booster pump control module and booster pump for placement in the rainwater storage tank.



The 3P Wall Mounted Controller with tank below



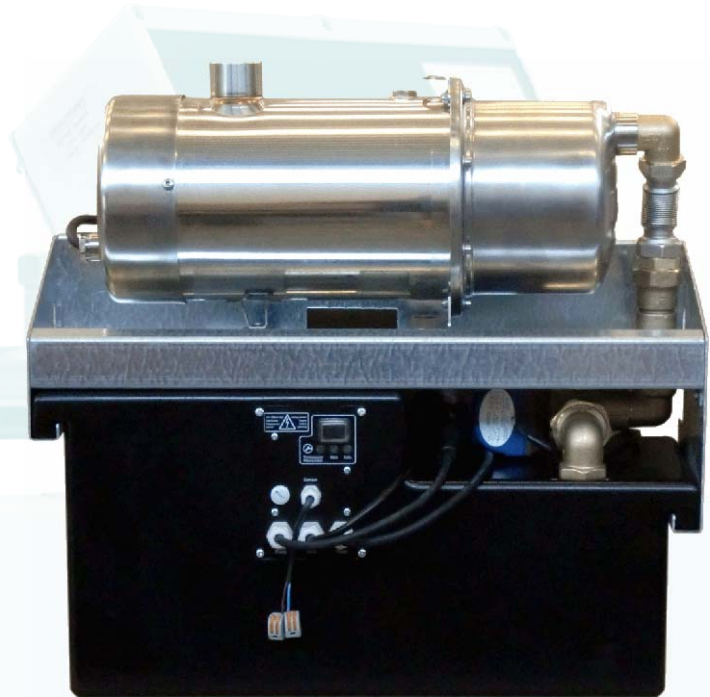
The 3P Floor Mounted Controller with tank behind

3P Wall & Floor Mounted Controllers

Rainwater Manager with demand-driven mains water back-up

Technical Features

- Polyethylene mains water tank.
- Galvanised metal console.
- Quiet centrifugal pump.
- Float switch with 20m lead and calibration weight.
- Emergency overflow.
- Integrated air-gap, compliant with UK water regulations.
- Dry-run and stagnation protection (10 days).
- Vibration dampers for pump.
- Available with a range of pump power ratings - single and multi-stage.



3P Wall Mounted Controller

Technical Specifications

Capacity (max.)	6m ³ / hour
Rated output	Depends on Steelpump
Supply current	Depends on Steelpump
Supply voltage	230V/50Hz
Pressure head (max.)	63m
System height (max.)	15m
Suction depth (max.)	XXm
Protection class	IP 42
Suction line	1" (Female connection)
Pressure line	1¼" (Female connection)
Mains water inlet	¾" (Male connection)
Emergency overflow	75mm OD
Mains water tank size	9 Litres

Dimensions and weights

Dimensions (WxHxD)	
Tank Behind:	550 x 550 x 335 mm
Tank Below:	
Weight :	25 kg

